



EHS Newsletter

Hello,

We are sharing a new issue of Echo's EHS Newsletter.

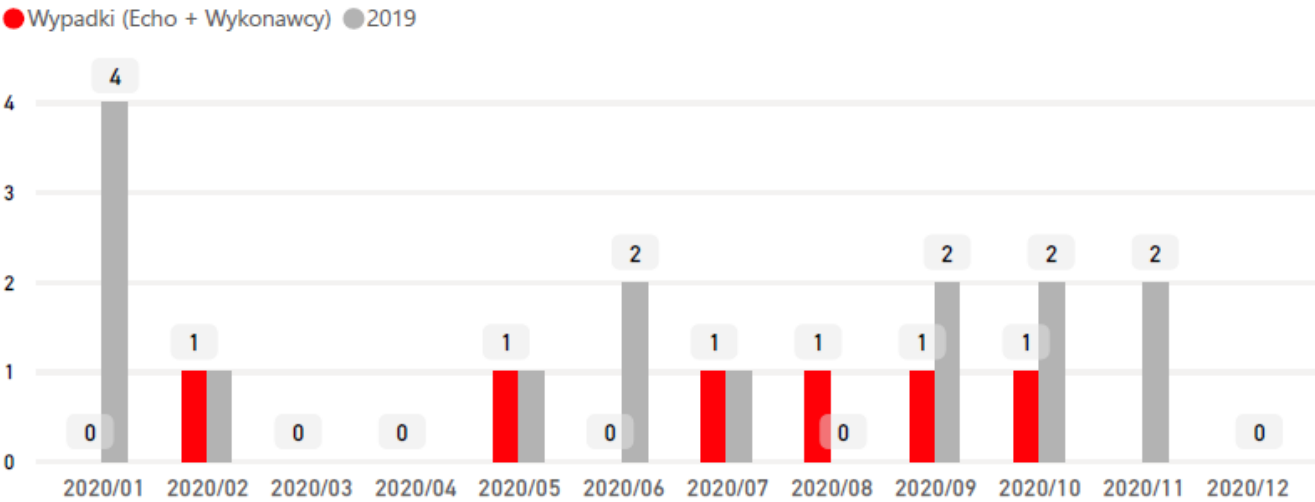
Below you will find a summary of the last four months of 2020.

Enjoy reading!

ECHO
investment

Indicators

ACCIDENTS AT WORK



From August to October, there were 3 accidents related to the lack of appropriate personal protective equipment and the use of inappropriate means of access (platform without a handrail).

There were also 8 incidents at construction sites. The ratio of serious incidents to accidents remains very good (22: 6). October was a month in which we did not record lost working days as a result of accidents. Thank you for submitting information about incidents!

The upward trend in peer to peer reviews continues, with a very good result of 99 visits in October.





Monthly reporting in projectFlow

At the beginning of 2021, we plan to expand the monthly EHS report to include environmental indicators on the amount of recycled waste, energy and water consumption and CO2 emissions.



eWyposażenie

A new electronic request form for workwear and equipment has been launched. It will simplify the process of ordering materials. You will find the link to the application in the EHS on the intranet.

Environmental ESG indicators

Beginning January 2021, we plan to implement ESG (environmental, social, governance) reporting. The ESG criteria relate to the impact of the company's activities on the environment, on society (e.g. employees, customers) and corporate governance.

Reporting will be online and will cover the following areas:

- CO2 (company cars, mileage, Euro standard);
- water consumption;
- energy consumption;
- waste recycling.

We would like to remind you of the necessity of submitting reports on waste generated by construction sites, including an online waste registration card in the BDO system.



DEKRA audit - ISO 14001/45001

We are pleased to announce that we have received a positive assessment of the DEKRA certification body for the compliance of the management system with ISO 14001 and the new ISO 45001 standard. No non-compliance was found during the audit. The auditors indicated the following among the areas for further improvement:

- PPE inspection cards,
- Performing by contractors in an accredited laboratory measurements of the working environment (noise, vibration, dust, microclimate),
- Emphasise in presentations and trainings the environmental issues.
- Create online waste registration cards for BDO,
- Mark people who have been trained to provide first aid at construction sites,
- Periodic inspections of the measuring apparatus of power tools by an accredited laboratory.

Due to the epidemiological situation, the audit was entirely online. This year, the following construction sites participated in the audit:

- Midpoint 71 Wrocław,
- React I (Piłsudskiego) Łódź,
- Wola I station (Ordonia) Warsaw,
- and the HR department.

We would like to thank everyone involved for your participation and support!



EHS elements in BIM

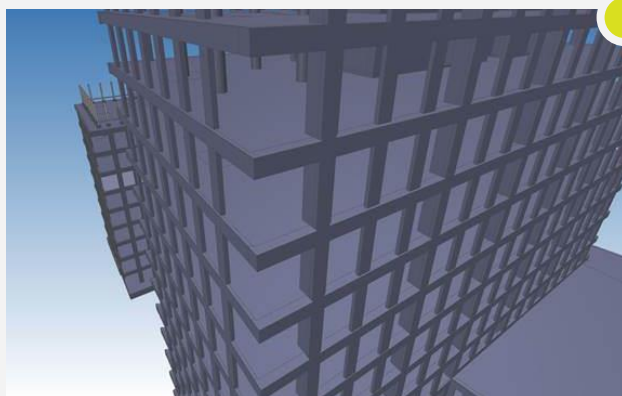
We continue work on the implementation of EHS elements at the design stage in BIM (Building Information Modeling) as part of a pilot project for React II in Łódź and Swobodna in Wrocław. Currently, meetings and consultations are held, during which we discuss the issues of determining the category and parameters for drawings, the possibility of placing the security libraries of the TLC provider, enabling the insertion of security into the object model.

The areas of activity in BIM that we would like to start implementing include in the first place:

- Drawing / selection / measurements of edge protections and protections in shafts and holes larger than 1m2,
- Protection of excavations - system solutions - drawing in the model and selection of the optimal type of protection,
- Organization of the construction site - separation of pedestrian routes and roads for vehicles.

At a later stage:

- Organization of construction facilities,
- Location of tower cranes,
- Indicating the place of installation of anchor points (for attaching personal safety equipment).





numer katalogowy
nazwa / treść

BB1882
Tabliczka

wymiar
materiał

15 x 15 cm
PCV fluorescencyjne



numer katalogowy
nazwa / treść

BB1881
Naklejka

wymiar
materiał

4 x 4 cm

What's new in SIDO?

The catalogue of the SIDO online store has been extended with a new assortment:

- Helmet sticker identifying employees who have undergone information training.
- Pictogram "Fire extinguisher / handheld firefighting equipment".
- Helmet identification sticker, for designated first aiders

Procedure for taking over new investment properties

The works on introducing the procedure of securing the real estate before the construction stage are nearing the end.

It happens that the property is unsecured and may generate a risk for people who will enter it illegally. The document will clarify the responsibility for securing the area in such situations as well as in the case of projects with buildings for demolition or in poor technical condition.

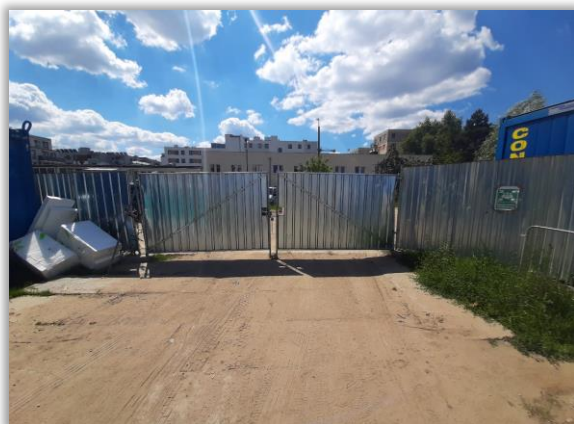


Protection of construction sites

Based on our observations during visits to construction sites, we remind you of the need to protect construction sites against unauthorized access.

For this purpose, it is very important to maintain the continuity of the fence. The constant presence of security guards at the construction site and access control are also important.

We also recommend an electronic protection system - video surveillance of the construction site (CCTV). It is also very important to constantly control the entrance gate to the construction site, and if it is necessary, to open an additional span of the fence or an additional gate.



Closed entrance gate
ENTER



Barrier and mirror on the entrance road
Face2Face



The „stadium” entrance gate
Taśmowa II



Video surveillance of the construction site, monitoring system (CCTV)
ENTER



Coronavirus

Due to the ongoing coronavirus pandemic, we would like to remind you to strictly follow the recommended procedures. Thank you for sticking to the guidelines in this regard, and informing about the coronavirus infection and contact with people who are positively diagnosed, thanks to which all Echo structures are carried out smoothly.

At the same time, we remind you of the basic rules, i.e. frequent hand washing, keeping your distance or using masks. In order to verify whether the construction site applies specific procedures related to COVID -19, the document "Construction checklist - protection against coronavirus and hygienic and sanitary conditions" has been developed.

The document and helpful graphics to display on the sites can be found on the Echo Extranet in the publications section, "Other" folder.



Updating the document "Echo requirements in the field of health and safety"

Due to recommendations following the DEKRA audit and as a result of the observation and analysis of IAN information, the "Requirements" document has been updated.

Changes include:

- Introduction a register of yellow-red cards.
- Marking of people designated to provide first aid - stickers on protective helmets.
- Introducing the necessity to use ladders, steps and platforms with handrails at construction sites.
- The necessity of periodic calibration of instruments for measuring power tools in an accredited laboratory.
- Contractors' obligation to perform measurements in an accredited laboratory in the working environment of harmful factors (noise, dust, vibrations, microclimate).

EHS Culture Survey at Echo Investment

By the end of October, 112 people from the construction teams and contractors' supervision completed EHS Culture questionnaires. The survey results show the need to further simplify EHS procedures and documentation and focus on good implementation of existing documents rather than introducing new elements.

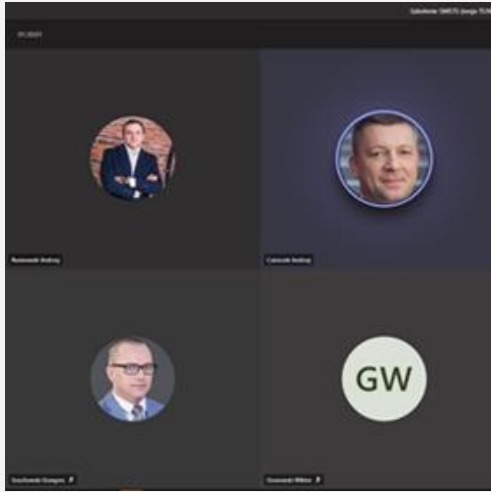
The responses, information and comments shared in the survey indicate the need to continue building a culture of EHS by raising employee awareness and explaining why compliance with the principles and rules described in our standards is important and what benefits it brings for all of us.



In general, survey participants emphasize the good quality of training conducted by Echo, and the involvement of Echo supervisors at construction sites in the issues of ensuring employee safety. The respondents also appreciated that ideas shared by employees are taken into account.

Thank you for all your opinions and participation in the survey!

Trainings



The EHS team continues its two-day internal SMSTS training online. After the training sessions have already been conducted, we noticed that this form of training works very well, which is confirmed by the participants in the questionnaires completed at the end of the training.

We have already trained about 80% of all employees.

Recognition

The National Labor Inspectorate "Build Safely,, Contest

So far, three Echo Investment projects have entered this year's edition of the „Build Safely” competition:

- Krakow KRK I
- Wroclaw Midpoint 71,
- Warsaw Wola II station

We encourage other construction sites to participate in the competition! Applications can be submitted until March 31, 2021.





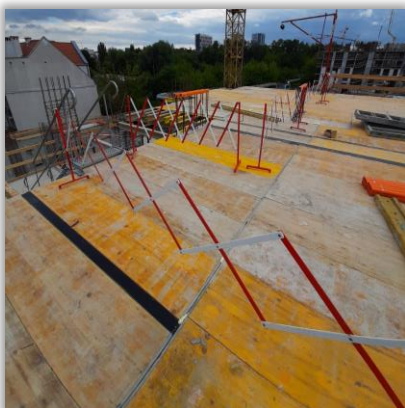
Prefabricated formwork platforms
MidPoint 71



Washer for cars leaving the construction site
Bonarka Living



Marking on the cover of the ceiling opening
Nasze Jeżyce I



Folding barriers delineating zones
Szczepanowskiego R4R



Dust extraction angle grinder
Nasze Jeżyce I



Gate integrated with the temperature measurement point
Stacja Wola



Temperature measurement with dispenser
Nasze Jeżyce II



Sump tray
MidPoint71



Portable urinal
Moje Miejsce

Good practices



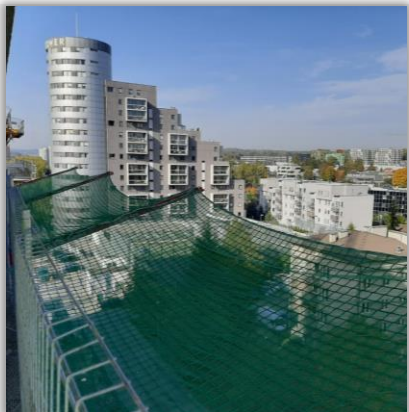
Portable wash basin
Nasze Jeżyce I



Toilets and disinfection point
Bonarka Living



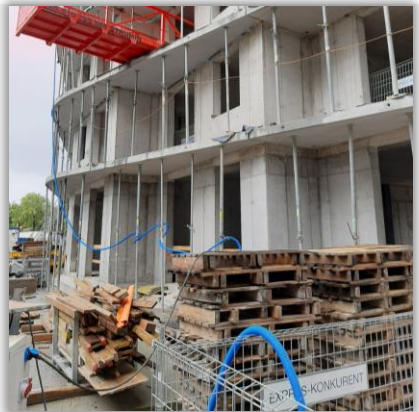
Edge protection on masonry walls
KRK I



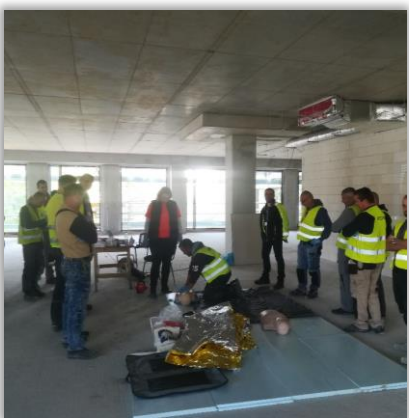
Protective nets
KRK I



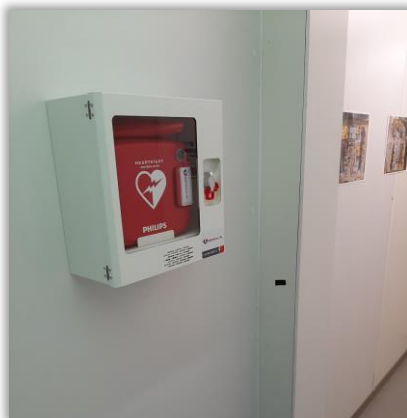
A grille on the technical trim
Fuzja



Metal support cables
KRK I



First aid training
REACT I



AED defibrillator
Fuzja / Stacja Wola I



System access footbridges
REACT I